

Public Info Map

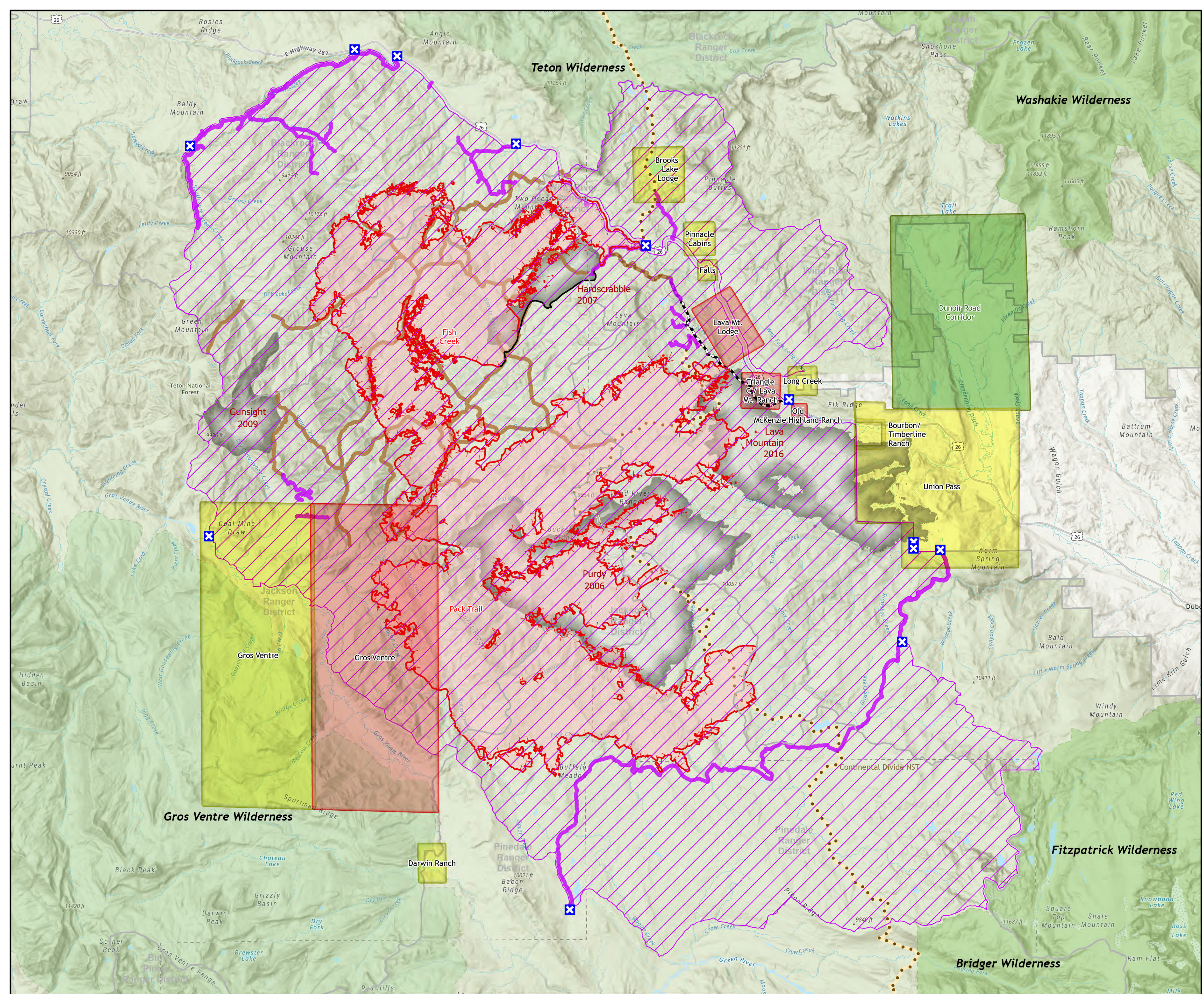
Pack Trail Fire

WY-BTF-002439

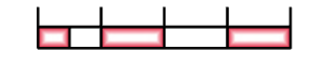
October 15, 2024

86,555 Acres as of
10/15 | 00:25

- Contained
- Uncontained
- Wildfire Perimeter
- Fire History
- Evacuation Warnings
 - Ready
 - Set
 - Go
- Fire Closure Order #04-03-24-316
 - Closure Area
 - Closed Road
 - Closed Trail
 - Closure Point
 - Continental Divide
 - National Scenic Trail
 - USFS Wilderness



Miles



Kilometers



1:120,000