

ECONOMIC IMPACT SUMMARY

FY-2021
IDAHO
NATIONAL
LABORATORY



The background features a blurred financial chart with various data points and percentage values. The text is centered within a dark blue hexagonal shape.

Disclaimer

This information was prepared as an account of work sponsored by an agency of the U.S. Government. Neither the U.S. Government nor any agency thereof, nor any of their employees, makes any warranty, expressed or implied, or assumes any legal liability or responsibility for the accuracy, completeness, or usefulness, of any information, apparatus, product, or process disclosed, or represents that its use would not infringe privately owned rights. References herein to any specific commercial product, process, or service by trade name, trademark, manufacturer, or otherwise, does not necessarily constitute or imply its endorsement, recommendation, or favoring by the U.S. Government or any agency thereof. The views and opinions of authors expressed herein do not necessarily state or reflect those of the U.S. Government or any agency thereof.

Table of Contents

02

Result Summary

04

Direct Effects

05

Impact on
Total Output

06

Impact on
Employment

07

Impact on
Labor Income

08

Value-Added
Impact

09

INL Total
Impact
Comparison

09

Multipliers





Result Summary

As the sixth largest employer in Idaho, Idaho National Laboratory (INL) provides a significant economic impact on Idaho's economy. INL's employment during fiscal year 2021 was 5,282. The laboratory's total impact grew by more than \$200 million – a 7% increase – between FY-2020 and FY-2021.

As INL develops and grows so does Idaho's economy. A more developed economy provides an enhanced opportunity for the state of Idaho to capture economic benefits from INL's presence. This enables the lab and supporting businesses to grow simultaneously.

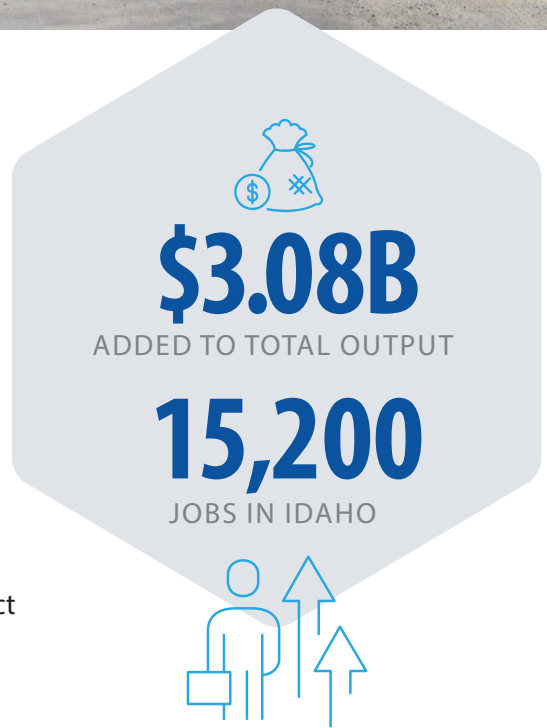
Idaho National Laboratory is one of the U.S. Department of Energy's (DOE) 17 national laboratories. The laboratory performs work in each of DOE's strategic goal areas: energy, national security, science and environment. INL is the nation's leading center for nuclear energy research and development. Day-to-

day management and operation of the laboratory is the responsibility of Battelle Energy Alliance (BEA).

This study evaluates the total economic impact of INL operations on Idaho's economy. The economic impacts identified in this study only include Idaho National Laboratory operations managed by BEA and not the impact of other DOE contractors, the DOE itself, or the Naval Reactors Facility.

Economic impacts are separated into three categories:

- **Direct Effects** constitute operation expenditures made by INL.
- **Indirect Effects**, which are the result of inter-industry trade between the lab and suppliers of goods and services within Idaho.
- **Induced Effects**, created by households' spending income earned directly or indirectly from INL operations.



Total economic impact is the combination of all three impact categories.

Combining Idaho National Laboratory's operations with additional indirect and induced impacts, the company adds more than **\$3.08 billion** to total output and more than **15,200** jobs in Idaho.

COMBINED INL ECONOMIC IMPACT ON STATE OF IDAHO

Impact Type	Employment ^a	Labor Income ^b	Value Added ^c	Output ^d
Direct Effect	5,282	\$800,451,082	\$1,018,520,181	\$1,572,181,120
Indirect Effect	4,639	\$221,507,926	\$347,344,968	\$737,553,031
Induced Effect	5,345	\$228,181,219	\$415,284,184	\$772,276,291
Total Impact	15,266	\$1,250,140,227	\$1,781,149,333	\$3,082,010,442
Multiplier	2.89	1.56	1.75	1.96

^aEmployment — The number of jobs created or sustained

^bLabor Income — The amount of income including employee compensation (wages and benefits) and proprietor income

^cValue Added — The value of a combination of innovation and improvement made as basic resources and intermediate goods are processed into final goods

^dOutput — The value of industry output or contributions to state gross domestic output

Other important impacts include:

+7%

INL'S TOTAL OUTPUT IMPACT GREW BY MORE THAN \$200 MILLION BETWEEN FY-2020 AND FY-2021

+61.5%

INL'S TOTAL OUTPUT IMPACT INCREASED BY 61.5% BETWEEN 2016 AND 2021

2%

THE TOTAL EMPLOYMENT IMPACT OF INL OPERATIONS ACCOUNTS FOR 2% OF IDAHO'S COVERED EMPLOYMENT

+35.4%

INCREASE IN TOTAL EMPLOYMENT IMPACTS BETWEEN 2016 AND 2021

3.7%

OF STATEWIDE ECONOMIC OUTPUT IS CREATED BY INL ACTIVITIES

- INL brought money into Idaho and generated additional value-added output of more than **\$1.78 billion**
- Nearly **\$1.5 billion** of economic output was generated through INL suppliers and employee household spending
- INL increased personal income in the state by **\$1.25 billion**
- INL economic impacts accounted for **1.4%** of all personal income in the state
- INL impacts resulted in an estimated **\$120 million** in state and local tax revenues
- Taxes generated by INL operations account for **2%** of total state and local tax revenue (based on FY-2021 state tax revenues)
- Average base salary of an INL employee in FY-2021 was **\$108,142**, up from \$104,157 in FY-2020.
- BEA subcontracted nearly **\$203 million** to Idaho subcontractors
- BEA corporate office contributed more than **\$627,200** in charitable contributions



SIXTH

LARGEST EMPLOYER IN IDAHO

INL DIRECTLY EMPLOYED 5,282 WORKERS IN IDAHO; SECONDARY EFFECTS IN IDAHO ACCOUNTED FOR AN ADDITIONAL 9,984 JOBS FOR A TOTAL OF 15,266 JOBS – A 6.7% INCREASE FROM FY-2020

Direct Effects

Direct effects include total operating expenses including the purchase of goods and services, taxes, education reimbursements, and payments to employees. These direct effects for FY-2021 account for \$1.57 billion (see Table 2). Payments to employees can be broken down into payment of

wages and salaries, and employee benefits.

To improve the accuracy of the economic impact model, INL operations and expenditures were analyzed according to the department or directorate where the expenses were incurred. Direct

effects were aggregated according to industry and directorate similarities creating a series of industry categories that more closely represent INL operations.

INL EXPENDITURES (MILLIONS): FY-2016-2021

Expense	FY-2016	FY-2017	FY-2018	*FY-2019	*FY-2020	*FY-2021	'20-'21 Change	% Change
Goods and Services	\$512,362,318	\$431,279,411	\$321,920,195	\$694,858,140	\$761,261,275	\$771,730,038	\$10,468,763	1.4%
Payroll Benefits Medical	\$61,677,469	\$66,949,001	\$69,419,512	\$77,865,800	\$76,442,071	\$92,165,089	\$15,723,018	20.6%
Payroll Benefits Retirement	\$63,235,297	\$57,047,239	\$66,549,068	\$59,895,728	\$72,572,284	\$73,911,852	\$1,339,568	1.8%
Payroll Salaries ^a	\$396,575,209	\$445,459,852	\$631,288,413	\$516,497,479	\$582,023,867	\$634,374,141	\$52,350,275	9.0%
Grand Total	\$1,033,850,293	\$1,000,735,504	\$1,089,177,188	\$1,349,117,147	\$1,492,299,497	\$1,572,181,120	\$79,881,624	5.4%

^aA change in accounting methodology resulted in a shift of funds from the payroll categories into goods and services
^aTotal Payroll Salaries and taxes include base salary, special pay, overtime, and taxes



Impact on Total Output

In FY-2021, INL operations added \$3.08 billion to Idaho's gross economic output. This represents more than 3.7% of Idaho's total output or gross state product. During FY-2021, the lab contracted to purchase more than \$203 million in goods and services with Idaho businesses. According to the economic impact model and the presence of potential

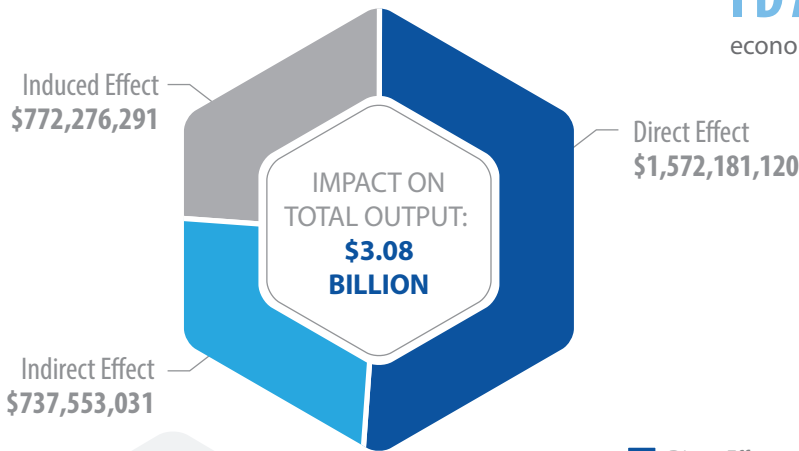
supporting businesses, the actual indirect impact of INL operations could reach nearly \$738 million.

INL employees' spending creates an additional \$772 million to Idaho's economy. For every \$100 in direct economic activity at INL, an additional \$96 of activity is created or sustained throughout the state's economy

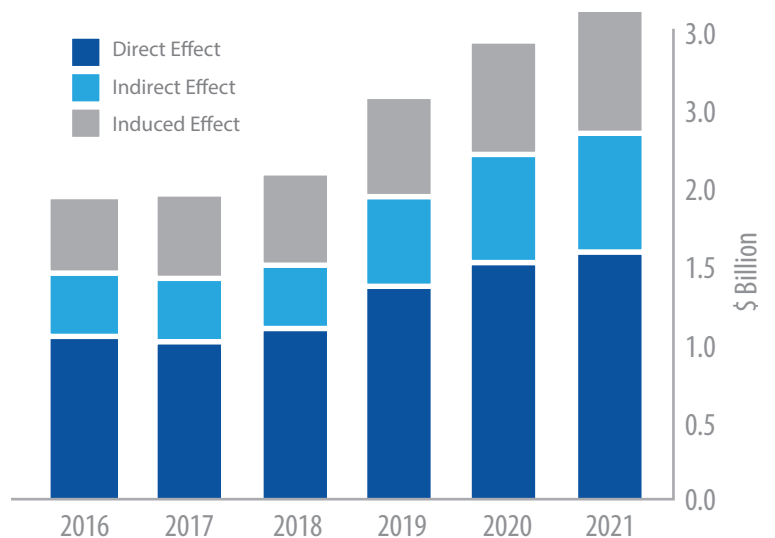
(resulting in an output multiplier of 1.96). Impacts increased by 61.5% between 2016 and 2021.

\$3.08 BILLION

IDAHO'S GROSS
economic output in FY-2021



INL EMPLOYEES' SPENDING CREATES AN ADDITIONAL **\$772 MILLION** TO IDAHO'S ECONOMY



HISTORICAL TOTAL OUTPUT IMPACTS

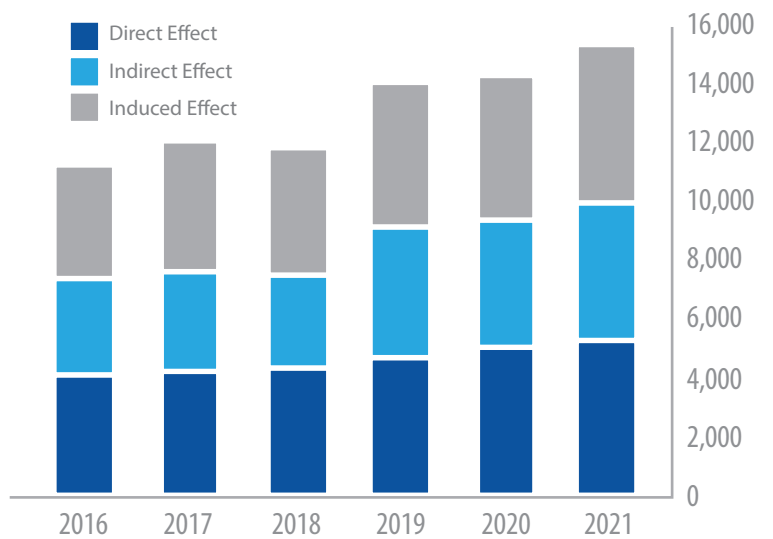
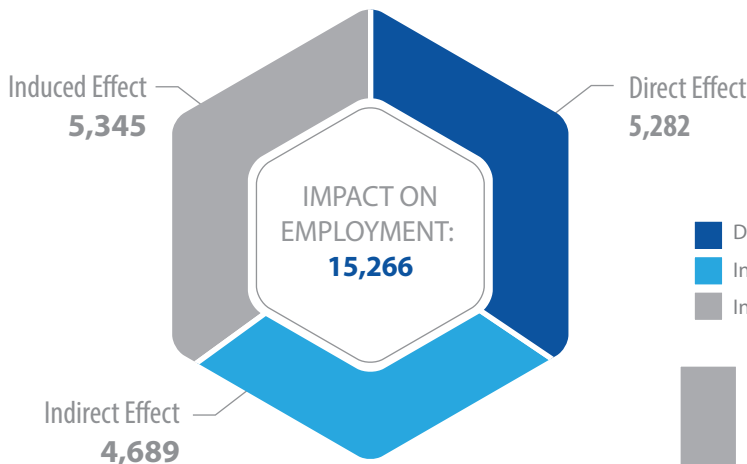


Impact on Employment

INL's average employment for FY-2021 was 5,282. An additional 4,639 jobs are created or sustained by industries supporting lab operations. INL employee spending creates or sustains an additional 5,345 jobs throughout Idaho.

The combined employment impact accounts for 15,266 jobs. For every INL job, there are 1.89 additional jobs created throughout Idaho. Between 2016 and 2021, employment impacts have increased by 35.5%.

5,282
INL EMPLOYEES
 average for FY-2021

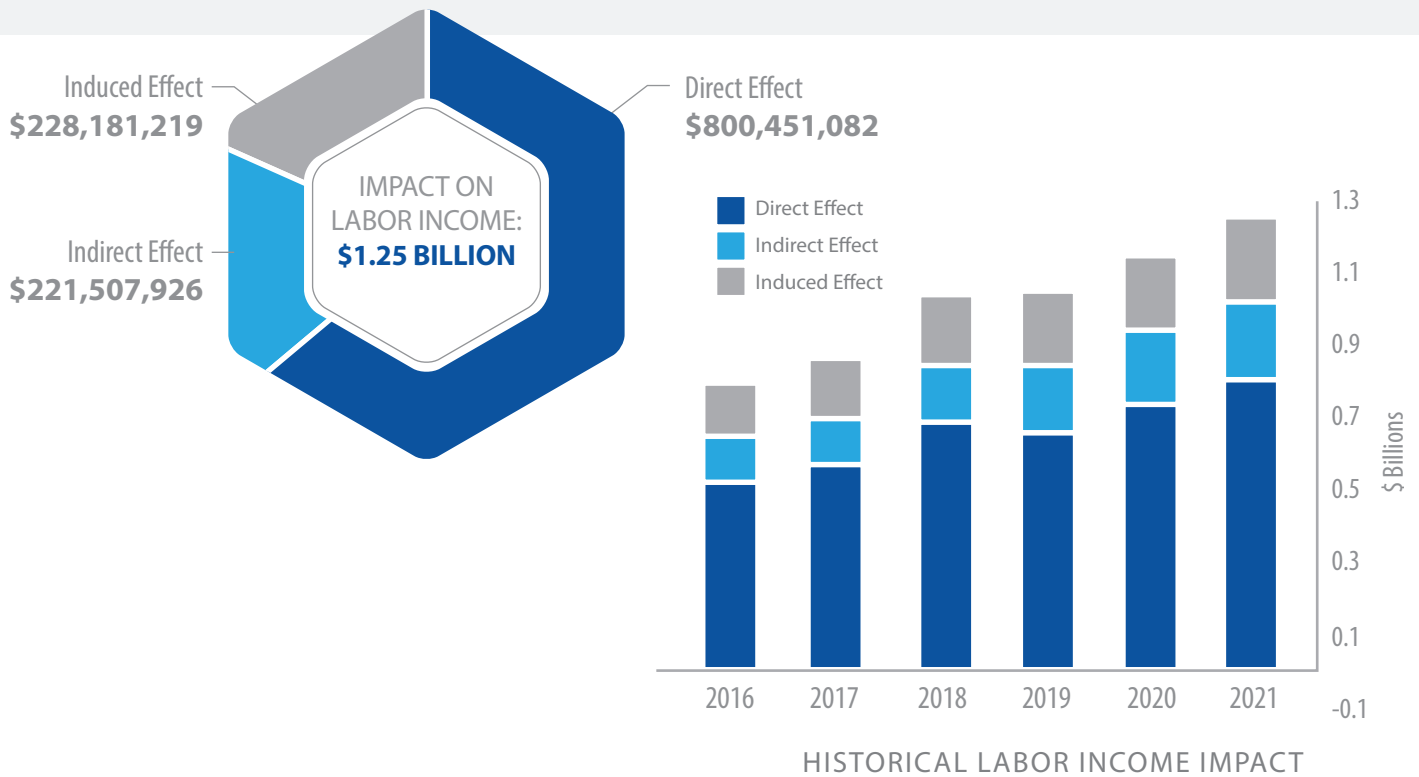


HISTORICAL EMPLOYMENT IMPACTS

Impact on Labor Income

INL's impact on Idaho's total labor income for FY-2021 was more than \$1.25 billion — or 1.4% of Idaho's total personal income. Total labor income includes wages and salaries, employee benefits and payroll taxes. The total income for

employees of industries supporting INL operations was nearly \$222 million. INL employees' household spending patterns generated \$228 million in employee compensation for individuals employed by Idaho businesses.



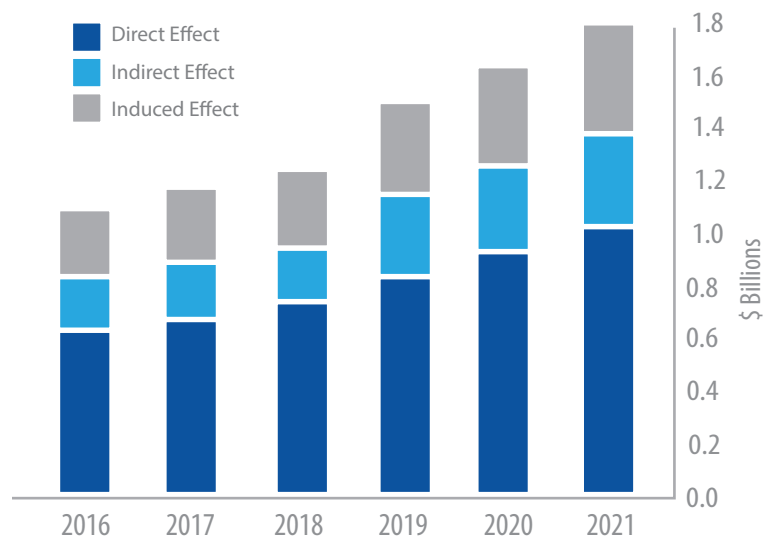
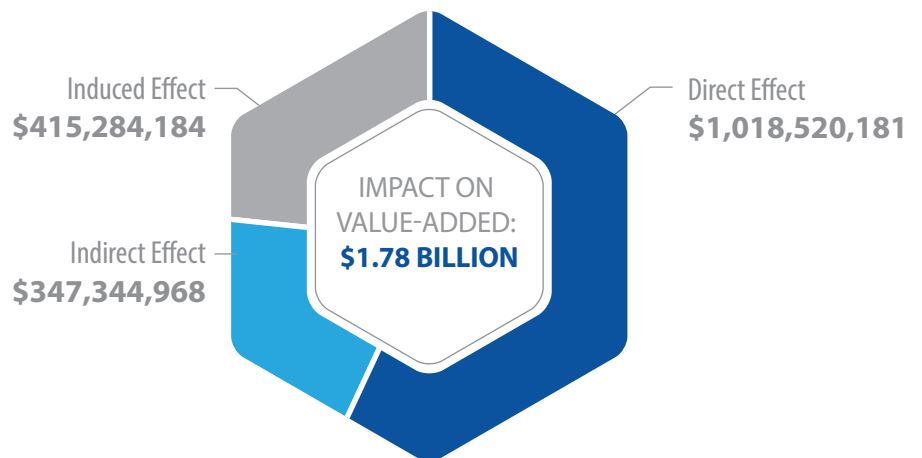
THE AVERAGE BASE SALARY OF AN INL EMPLOYEE

\$108,142

Value-Added Impact

Value-added impacts are created by a combination of innovation and improvement as basic resources and intermediate goods are processed into final goods. Service-related production also added significant value to the economy. INL directly added more than \$1 billion of value to Idaho. Industries supporting the

lab indirectly added more than \$347 million of value to Idaho. Induced value-added impacts resulted in more than \$415 million in economic activity. The total value-added impact was more than \$1.78 billion. Value added impacts increased by more than 64 percent between 2016 and 2021.



INL Total Impact Comparison

INL's increased economic activity in FY-2021 led to a \$202 million, or 7%, increase in output when compared to FY-2020. This resulted in a net change of 953 jobs throughout Idaho. Added employment at INL and supporting business fueled

growth in labor income by almost \$106 million – a 9.2% increase over FY-2020. The combined value-added impact of innovation at INL and supporting businesses improved by nearly \$155 million or 9.5% from FY-2020 to FY-2021.

INL TOTAL IMPACT COMPARISON (\$BILLIONS)

Impact Type	FY-2016	FY-2017	FY-2018	FY-2019	FY-2020	FY-2021	'20-'21 Change	% Change
Output	\$1,908	\$1,935	\$2,059	\$2,544	\$2,880	\$3,082	\$202	7.0%
Value Added	\$1,085	\$1,160	\$1,236	\$1,487	\$1,626	\$1,781	\$155	9.5%
Labor Income	\$795	\$862	\$1,035	\$1,046	\$1,145	\$1,250	\$106	9.2%
Employment	11,276	12,027	11,789	13,971	14,313	15,266	953	6.7%

Multipliers

INL'S 2021 OUTPUT MULTIPLIER WAS 1.96



- **Output Multiplier** – INL's output multiplier was 1.96, which means that for every \$100 of direct impact added by INL operations, an additional \$96 will be generated throughout the Idaho economy.
- **Employment Multiplier** – INL's employment multiplier is 2.89, which means that an addition of 100 employees to INL's payroll will result in an additional 189 created throughout the Idaho economy.
- **Labor Income Multiplier** – INL's labor income multiplier is 1.56, which means that if employee compensation by INL to its employees were to increase by \$100, then an additional \$56 in employee compensation would be added to the Idaho economy.
- **Value Added Multiplier** – INL's value added multiplier is 1.75, which means that if value added by INL to the production of final goods and services were to increase by \$100, an additional \$75 in value would be added to the Idaho economy.

