



IDAHO

STATE REPORT
09.20.2020

SUMMARY

- Idaho is in the red zone for cases, indicating 101 or more new cases per 100,000 population last week, with the 15th highest rate in the country. Idaho is in the orange zone for test positivity, indicating a rate between 8.0% and 10.0%, with the 5th highest rate in the country.
- Idaho has seen an increase in new cases and a decrease in test positivity over the last week, associated with expanded testing.
- The following three counties had the highest number of new cases over the last 3 weeks: 1. Ada County, 2. Canyon County, and 3. Bonneville County. These counties represent 49.5% of new cases in Idaho.
- Rexburg (Brigham Young University-Idaho), Moscow (University of Idaho) and Pocatello (Idaho State University) all have substantial increases in cases and test positivity.
- 55% of all counties in Idaho have moderate or high levels of community transmission (yellow, orange, or red zones), with 30% having high levels of community transmission (red zone).
- During the week of Sep 7 - Sep 13, 5% of nursing homes had at least one new resident COVID-19 case, 12% had at least one new staff COVID-19 case, and 4% had at least one new resident COVID-19 death.
- Idaho had 112 new cases per 100,000 population in the last week, compared to a national average of 86 per 100,000.
- Current staff deployed from the federal government as assets to support the state response are: 9 to support operations activities from FEMA and 1 to support epidemiology activities from CDC.
- Between Sep 12 - Sep 18, on average, 12 patients with confirmed COVID-19 and 5 patients with suspected COVID-19 were reported as newly admitted each day to hospitals in Idaho. An average of greater than 95% of hospitals reported either new confirmed or new suspected COVID patients each day during this period.

RECOMMENDATIONS

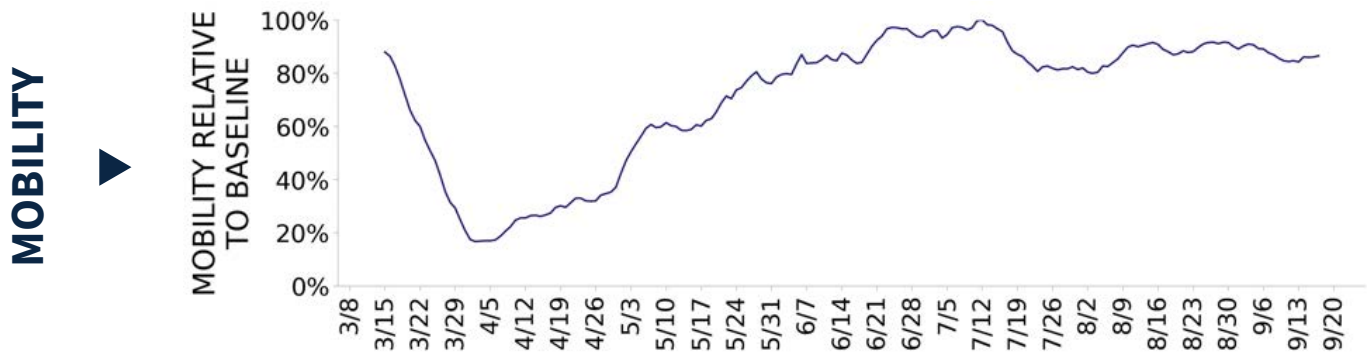
- Mitigation efforts have been effective in Boise but increasing case rates in other metro areas and counties with increasing test positivity are concerning; intensify efforts where case rates are elevated or increasing and encourage local ordinances for face coverings.
- Continue intensified public health messaging to cities and communities with elevated or increasing case rates and/or test positivity; focus on educating families and older/vulnerable individuals about spread among younger adults and ways to keep safe.
- Continue to monitor hospitalizations and ensure hospital and EMS capacity remain sufficient and staff training is current.
- Require all institutions of higher education (IHE) to have a plan for surge testing and isolation facilities for campus outbreaks (surge testing of 50-100% of the student body over a 14-day period with structured surveillance thereafter and surge capacity to isolate up to 5-10% of student body). Case management services should ensure safe isolation on campus or safe release to family quarantine.
- Encourage or require strong mitigation efforts on campus, including enforcement of masks and social distancing; de-densification of residences and classrooms; maximum ventilation adjustments in all buildings; creation of sheltered outside study and dining areas, if reasonable; and proactive and adaptive limits on bar patronage and student gatherings on and off campus.
- Post university testing results on state website.
- Continue to explore use of focused wastewater surveillance to efficiently detect cases early and to direct diagnostic testing and public health interventions.
- Continue to conduct infection control surveys in all nursing homes with an initial case or 3 or more cases in the last week.
- Continue to implement CMS testing recommendations at all long-term care facilities (LTCFs), enforce use of face coverings by all staff, segregate residents and ensure social distancing is implemented and restrict in-person visitation, especially in high transmission zones.
- Implement a plan for increased surveillance using the Abbott BinaxNOW or other antigen tests.
- Develop weekly surveillance among critical populations to monitor degree of community spread among K-12 teachers, staff working at LTCFs, prison staff, public transportation workers, and first responders, as capacity allows.
- Tribal Nations: Intensify specific, culturally relevant public health messaging. Spaces, supplies and counselling to support quarantine of contacts and isolation of cases should be provided, as needed.
- Specific, detailed guidance on community mitigation measures can be found on the [CDC website](#).



IDAHO

STATE REPORT | 09.20.2020

	STATE, LAST WEEK	STATE, % CHANGE FROM PREVIOUS WEEK	FEMA/HHS REGION, LAST WEEK	UNITED STATES, LAST WEEK
NEW COVID-19 CASES (RATE PER 100,000)	2,008 (112)	+14%	6,737 (47)	283,590 (86)
VIRAL (RT-PCR) LAB TEST POSITIVITY RATE	9.0%	-2.9%*	3.9%	4.4%
TOTAL VIRAL (RT-PCR) LAB TESTS (TESTS PER 100,000)	20,801** (1,164)	+16%**	174,437** (1,215)	5,881,734** (1,792)
COVID-19 DEATHS (RATE PER 100,000)	26 (1.5)	-13%	99 (0.7)	5,580 (1.7)
SNFs WITH ≥1 NEW RESIDENT COVID-19 CASE (≥1 NEW STAFF CASE)	5% (12%)	-4%* (-13%*)	4% (9%)	9% (19%)
SNFs WITH ≥1 NEW RESIDENT COVID-19 DEATH	4%	+0%*	2%	4%



* Indicates absolute change in percentage points.

** Due to delayed reporting, this figure may underestimate total diagnostic tests and week-on-week changes in diagnostic tests.

DATA SOURCES – Additional data details available under METHODS

Note: Some dates may have incomplete data due to delays in reporting. Data may be backfilled over time, resulting in week-to-week changes.

Cases and Deaths: State values are calculated by aggregating county-level data from USAFacts; therefore, the values may not match those reported directly by the state. Data is through 9/18/2020; last week is 9/12 - 9/18, previous week is 9/5 - 9/11.

Testing: CELR (COVID-19 Electronic Lab Reporting) state health department-reported data through 9/16/2020. Last week is 9/10 - 9/16, previous week is 9/3 - 9/9.

Mobility: Descartes Labs. This data depicts the median distance moved across a collection of mobile devices to estimate the level of human mobility within a county. The 100% represents the baseline mobility level prior to the pandemic; lower percent mobility indicates less population movement. Data is

IDAHO

STATE REPORT | 09.20.2020

COVID-19 COUNTY AND METRO ALERTS*

Top 12 shown in table (full lists below)

METRO AREA (CBSA) LAST WEEK

COUNTY LAST WEEK

LOCALITIES IN RED ZONE	6	Idaho Falls Twin Falls Pocatello Blackfoot Ontario Logan	13	Bonneville Twin Falls Bingham Bannock Payette Jefferson Jerome Power Idaho Fremont Cassia Caribou
LOCALITIES IN ORANGE ZONE	3	Coeur d'Alene Burley Moscow	4	Kootenai Latah Washington Franklin
LOCALITIES IN YELLOW ZONE	4	Boise Rexburg Sandpoint Jackson	7	Ada Canyon Madison Bonner Minidoka Gem Gooding

All Red Counties: Bonneville, Twin Falls, Bingham, Bannock, Payette, Jefferson, Jerome, Power, Idaho, Fremont, Cassia, Caribou, Custer, Camas, Clark, Oneida

Red CBSAs: Idaho Falls CSBA is comprised of Bonneville County, ID; Butte County, ID; and Jefferson County, ID. Twin Falls CBSA is comprised of Jerome County, ID and Twin Falls County, ID. Pocatello CBSA is comprised of Bannock County, ID and Power County, ID. Blackfoot CBSA is comprised of Bingham County, ID. Ontario CBSA is comprised of Payette County, ID and Malheur County, OR. Logan CBSA is comprised of Franklin County, ID and Cache County, UT.

Orange CBSAs: Coeur d'Alene CBSA is comprised of Kootenai County, ID. Burley CBSA is comprised of Cassia County, ID and Minidoka County, ID. Moscow CBSA is comprised of Latah County, ID.

Yellow CBSAs: Boise CBSA is comprised of Ada County, ID; Boise County, ID; Canyon County, ID; Gem County, ID; and Owyhee County, ID. Rexburg CBSA is comprised of Fremont County, ID and Madison County, ID. Sandpoint CBSA is comprised of Bonner County, ID. Jackson CBSA is comprised of Teton County, ID and Teton County, WY.

* Localities with fewer than 10 cases last week have been excluded from these alerts.

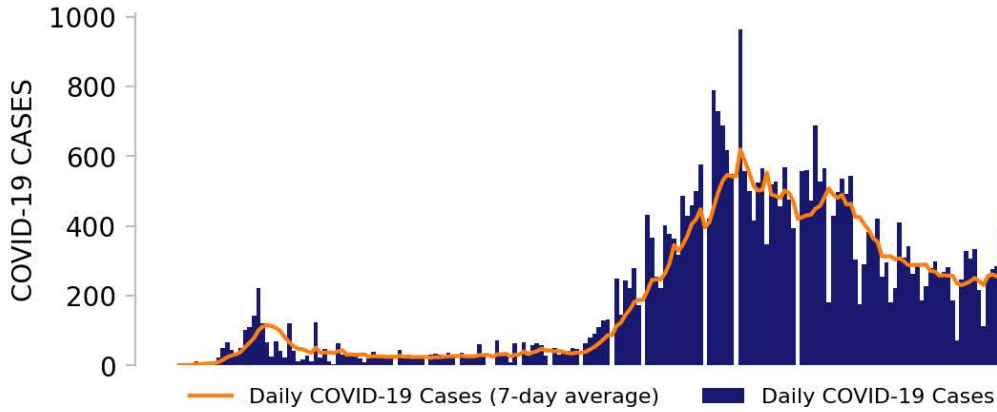
Note: Lists of red, orange, and yellow localities are sorted by the number of new cases in the last 3 weeks, from highest to lowest. Some dates may have incomplete data due to delays in reporting. Data may be backfilled over time, resulting in week-to-week changes.

DATA SOURCES – Additional data details available under METHODS

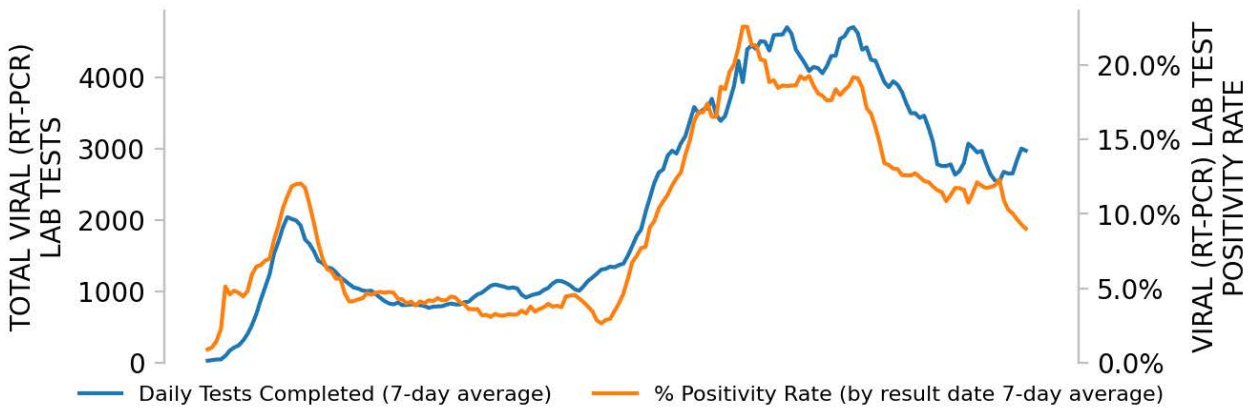
IDAHO

STATE REPORT | 09.20.2020

NEW CASES

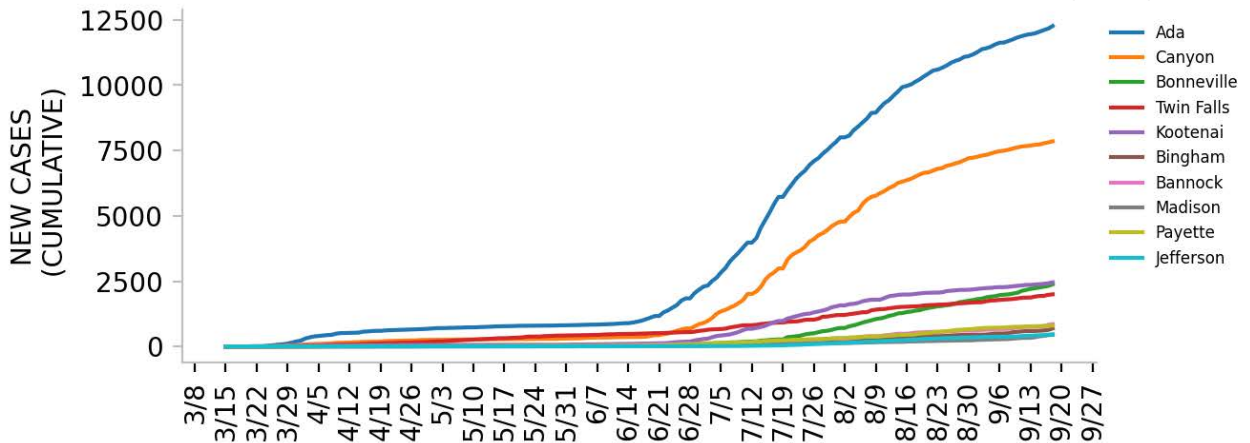


TESTING



Top counties based on greatest number of new cases in last three weeks (8/29 - 9/18)

TOP COUNTIES



DATA SOURCES – Additional data details available under METHODS

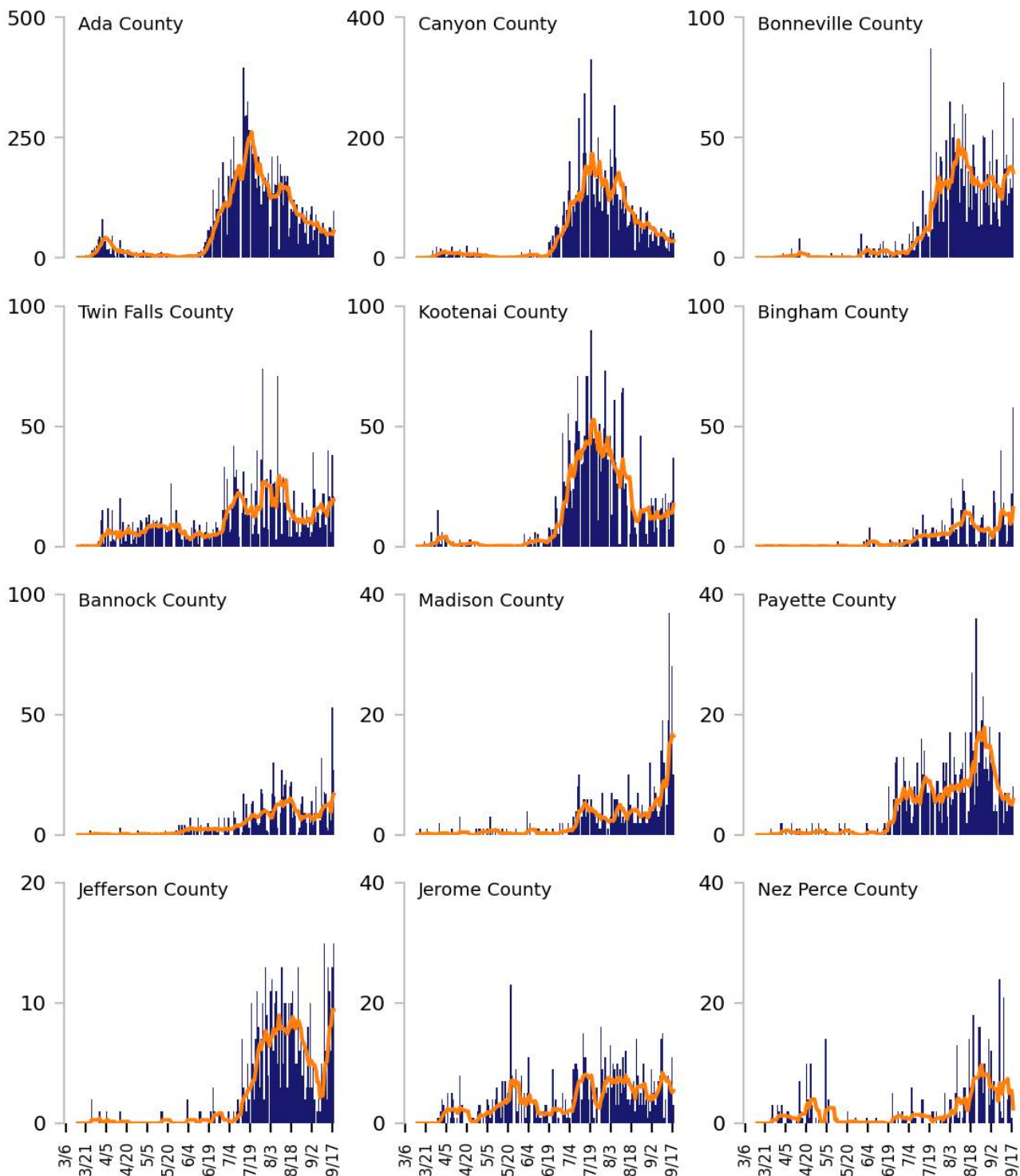
Note: Some dates may have incomplete data due to delays in reporting. Data may be backfilled over time, resulting in week-to-week changes.

Cases: State values are calculated by aggregating county-level data from USAFacts; therefore, the values may not match those reported

Top 12 counties based on number of new cases in the last 3 weeks

— Daily COVID-19 Cases (7-day average) ■ Daily COVID-19 Cases

TOTAL DAILY CASES

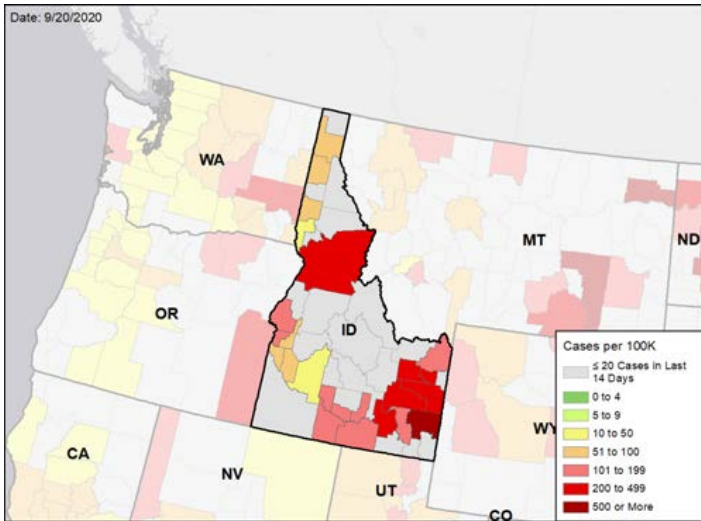


IDAHO

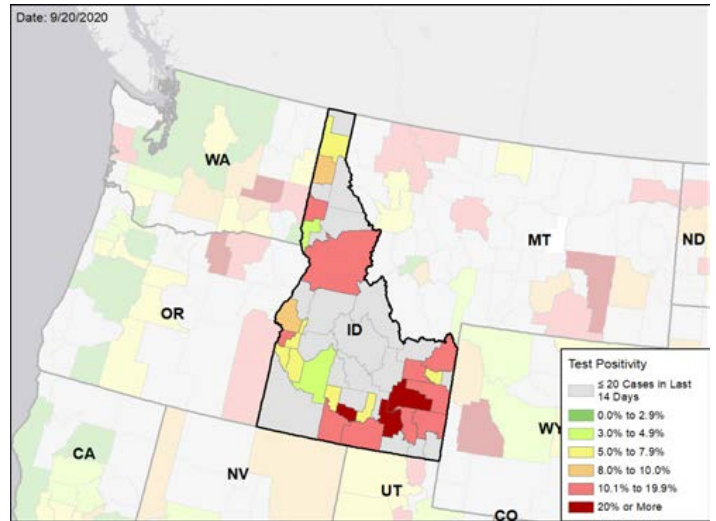
STATE REPORT | 09.20.2020

CASE RATES AND VIRAL LAB TEST POSITIVITY DURING THE LAST WEEK

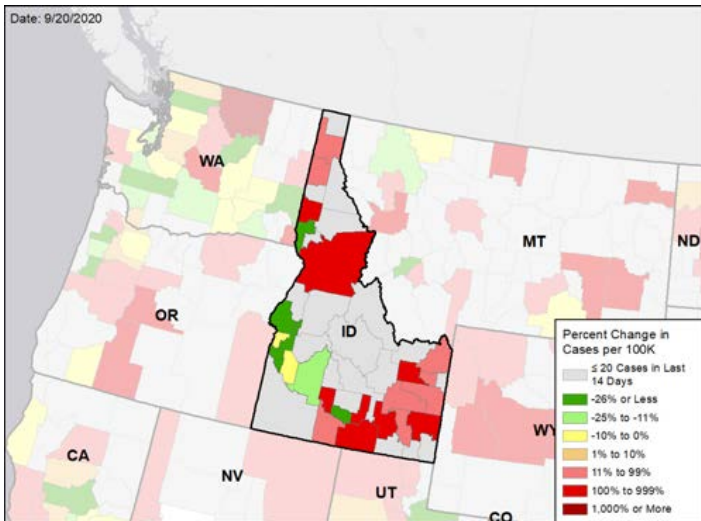
NEW CASES PER 100,000 DURING THE LAST WEEK



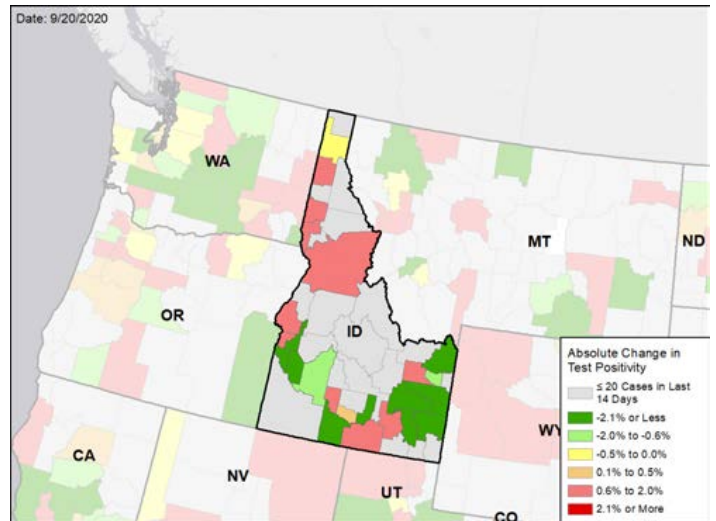
VIRAL (RT-PCR) LABORATORY TEST POSITIVITY DURING THE LAST WEEK



WEEKLY CHANGE IN NEW CASES PER 100,000



WEEKLY CHANGE IN VIRAL (RT-PCR) LABORATORY TEST POSITIVITY



DATA SOURCES – Additional data details available under METHODS

Note: Some dates may have incomplete data due to delays in reporting. Data may be backfilled over time, resulting in week-to-week changes.

Cases: State values are calculated by aggregating county-level data from USAFacts; therefore, the values may not match those reported

directly by the state. Data is through 9/16/2020. Last week is 9/13 - 9/19. Previous week is 9/5 - 9/11.