



Jefferson Joint School District #251

Every Student Can Learn and Succeed

3850 E 300 N

Rigby, ID 83442

(208) 745-6693 / (208) 745-0848 (fax)

Back to School Plan Overview

Approved by Jefferson Joint School District Board of Trustees 08/05/2020

Jefferson School District 251 will be open with safety and health protocols in place to mitigate and limit the spread of COVID-19. To make each of these possible scenarios easy to remember and implement, they have each been assigned a color:

MINIMAL RISK	<ul style="list-style-type: none"> • Five days of school per week schedule • School buildings will be cleaned and disinfected according to the CDC guidelines • Buses will be cleaned and disinfected according to the CDC guidelines; students are encouraged to wear a mask since physical distancing protocols cannot be maintained on buses • School lunches will be staggered to limit the number of students in the cafeteria and hallways • Physical distancing protocols will be followed when possible • Limited use of shared supplies and material • Field trips, assemblies and large group activities may be limited • Safety protocols in place for volunteers and visitors
MODERATE RISK	<ul style="list-style-type: none"> • Five days of school per week schedule • All safety precautions in green will be followed during the moderate risk level • School lunches will be staggered to limit the number of students in the cafeteria; hallways and alternate areas for students to eat lunch will be established • Field trips, assemblies and large group activities will be limited to ensure physical distancing can be accomplished
HIGH RISK	<ul style="list-style-type: none"> • All safety precautions in green and yellow will be followed during the high-risk level • Students with last names beginning with A-L will attend on Mondays and Thursday and students with last names beginning with M-Z will attend Tuesdays and Fridays • Days when students are not in school are designated online learning days; Wednesdays will be online learning for all students; schools will be deep cleaned and sanitized on Wednesday • The district will offer internet access in parking lots • School events and gatherings will have no spectators or the number of spectators will be limited depending on venue and ability to effectively physical distance
CRITICAL RISK	<ul style="list-style-type: none"> • Reduce the risk of further community spread by closing the schools • All students in an on-line remote learning model with focused, rigorous instruction on key standards in each grade and content area and traditional grades and accountability • There may be opportunities for in-person small group instruction or interventions • Closed campuses to the public, except by appointment • No extracurricular activities or special events in district

*Students/staff will be expected to follow any safety mandates from Eastern Idaho Public Health.



Jefferson Joint School District #251

Every Student Can Learn and Succeed

3850 E 300 N

Rigby, ID 83442

(208) 745-6693 / (208) 745-0848 (fax)

Back to School Plan 2020

Working Together to Keep Schools Open

To accomplish our goal of opening Jefferson School District 251 schools and keeping them open, it will be important for students, staff, parents, and patrons to do their part by following health guidance and monitoring their health. In cooperation with Eastern Idaho Public Health, we ask that as students and staff prepare for each school day, they ask themselves these questions:

Are you experiencing any of these symptoms?

- Fever or chills (temperature 100.4 F or higher)
- Shortness of breath/difficulty breathing
- Fatigue
- Loss of taste or smell
- Muscle/body Aches
- Congestion and/or runny nose
- Vomiting
- Diarrhea
- Nausea
- Sore throat
- Headache
- Cough

Please do not send your student to school if they are experiencing any of these symptoms. Immediately contact your healthcare provider. If your student tests positive for COVID-19, we ask that you do not send your student to school until they have been isolated for 10 days from symptom onset and at least 24 hours have passed since the symptoms have improved. If your student has been in close contact with someone testing positive for COVID-19, we ask that you do not send your student to school until they have been isolated for 10 days and has no COVID-19 symptoms. If your student presents COVID-19 symptoms, immediately contact your healthcare provider.

If your student has tested positive for COVID-19:

Please do not send them to school

Notify your school.

Follow the directions given to you from your health care provider and Eastern Idaho Public Health.

Staff members who test positive for COVID-19 should:

Immediately notify their supervisor.

Stay at home and follow the directions given to them by their health provider and Eastern Idaho Public Health regarding isolation and contact tracing.

Isolate for 10 days in accordance with Eastern Idaho Public Health guidelines & monitor health daily.

We will work with Eastern Idaho Public Health to respond to any positive COVID-19 tests within our school district.

Minimal Risk Level

District- wide Practices	<ul style="list-style-type: none"> • Five days of school per week schedule • Physical distancing where possible • Masks will be optional • School buildings will be cleaned and disinfected according to the CDC guidelines • Hand washing will be encouraged throughout the day • Hand sanitizer will be available throughout the school buildings
Classrooms	<ul style="list-style-type: none"> • Desks will be arranged to allow for physical distancing where possible • Limited use of shared supplies and materials • Staff working closely with small groups will be encouraged to wear a face mask
School Buildings	<ul style="list-style-type: none"> • Safety protocols in place for volunteers and visitors • Sneeze guards will be installed in school buildings main office • Individual schools will establish physical distancing protocols
Common Areas	<ul style="list-style-type: none"> • School lunches will be staggered to limit the number of students in the cafeteria and hallways • Some students may eat in other areas of the school or outside (weather permitting) • Students will move in cohort groups when possible to limit possible exposure
Transportation	<ul style="list-style-type: none"> • Buses will be cleaned and disinfected according to the CDC guidelines • Students are encouraged to wear face masks on the school bus since physical distancing protocols cannot be maintained while being transported • Students will follow driver's loading and unloading instruction • Students will have assigned/designated seating
Extra-curricular Activities	<ul style="list-style-type: none"> • Field trips, assemblies or other large group activities may be limited • Games/practices held as scheduled following IHSAA guidelines • Facilities and equipment cleaned and sanitized after each game/practice • Team areas extended on sidelines to allow for physical distancing • Athletes will practice in cohort groups when possible to limit possible exposure • Practice stations will last no more than 10 minutes • Individual water bottles • To help prevent spread of the virus and ensure our seasons are able to progress we ask all participants to wear a mask on the bus and any other time physical distancing is not possible • Allow participants to travel to and from events with parents • Any student athlete with symptoms will stay at home and self-quarantine until cleared by a medical professional • Six feet physical distancing will be maintained by spectators not of the same household; some seating will not be utilized within the facility
Priorities in Green	<ul style="list-style-type: none"> • Ensure students and staff who are sick or showing symptoms stay at home • Implement physical distancing and cohort groups where possible

*Students/staff will be expected to follow any safety mandates from Eastern Idaho Public Health

Moderate Risk Level

District- wide Practices	<ul style="list-style-type: none">• Physical distancing where possible• School buildings will be cleaned and disinfected according to the CDC guidelines• Hand washing will be encouraged throughout the day• Hand sanitizer will be available throughout the school buildings
Classrooms	<ul style="list-style-type: none">• Desks will be arranged to allow for physical distancing where possible• Limited use of shared supplies and materials• Staff working closely with small groups will be encouraged to wear a face mask
School Buildings	<ul style="list-style-type: none">• Access to campus may be limited with safety protocol in place for volunteers and visitors• Sneeze guards will be installed in school buildings main office
Common Areas	<ul style="list-style-type: none">• School lunches will be staggered to limit the number of students in the cafeteria and hallways• Some students may eat in other areas of the school or outside (weather permitting)
Transportation	<ul style="list-style-type: none">• Buses will be cleaned and disinfected according to the CDC guidelines• Students will wear face masks on the school bus since physical distancing protocols cannot be maintained while being transported• Students will follow driver's loading and unloading instruction• Students will have assigned/designated seating
Extra-curricular Activities	<ul style="list-style-type: none">• Field trips, assemblies or other large group activities may be limited• All safety precautions in green will be followed during the moderate risk level• Face coverings will be worn by players, coaches and spectators when not participating in play• Student-athlete temperature checks before practice and competitions• Number of spectators will be limited to ensure physical distancing can be maintained• Team meals will be eliminated• Bus capacity 50%, one student-athlete per seat, participants encouraged to ride with parents
Priorities in Yellow	<ul style="list-style-type: none">• Ensure students and staff who are sick or showing symptoms stay at home• Implement physical distancing when possible

*Students/staff will be expected to follow any safety mandates from Eastern Idaho Public Health

High Risk Level

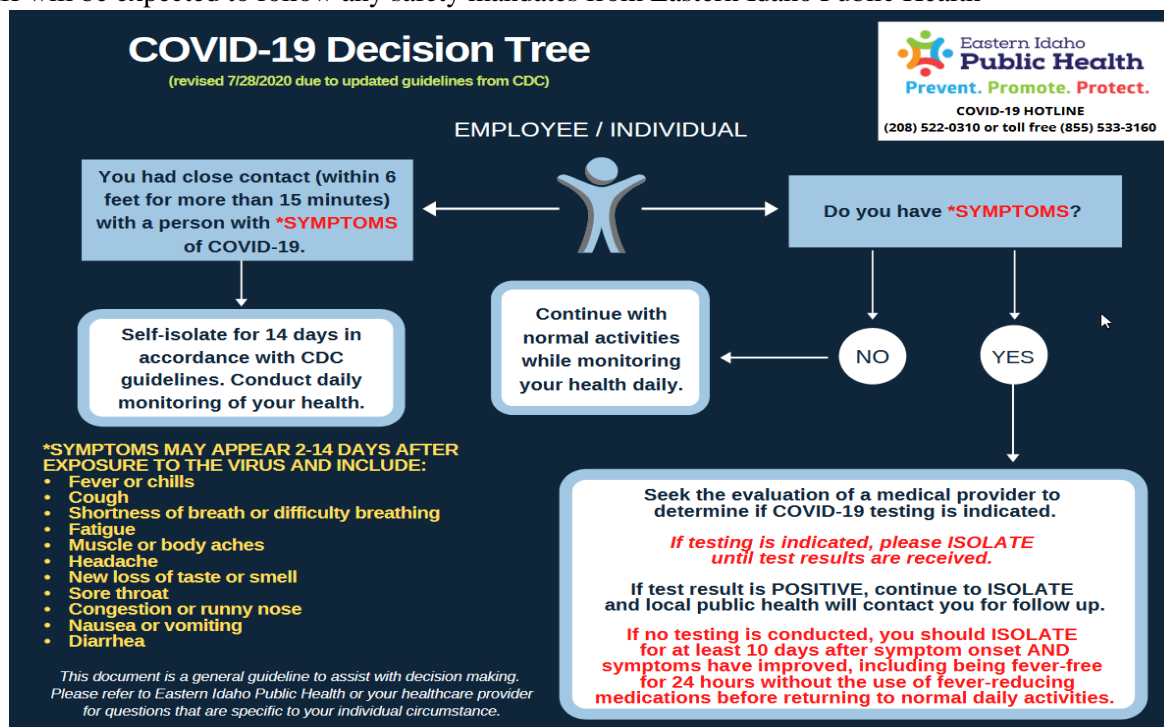
Schedule	<ul style="list-style-type: none">• Students attend school two days a week; students with last names beginning with A-L will attend on Mondays and Thursday and students with last names beginning with M-Z will attend Tuesdays and Fridays• Wednesday will be an online learning day• Staff will be supporting students and taking part in professional development on Wednesdays
District-wide Practices	<ul style="list-style-type: none">• Physical distancing where possible and reasonable• Buildings cleaned and disinfected according to CDC guidelines• Hand washing encouraged throughout the day• Hand sanitizer available throughout the buildings
Classroom Spaces	<ul style="list-style-type: none">• Students will attend school on a hybrid schedule and school times may be adjusted• With the hybrid schedule, staff will ensure physical distancing protocols are followed in the classroom
School Spaces	<ul style="list-style-type: none">• Sneeze guards will be installed in school buildings main office• Other school events and gatherings may be changed or cancelled to limit gatherings• Internet access will be available in school parking lots• Access to campus may be limited with safety protocol in place for volunteers and visitors• Space to isolate students/staff who become ill during the school day
Common Spaces	<ul style="list-style-type: none">• Students will move in cohort groups where possible to limit possible exposure
Transportation	<ul style="list-style-type: none">• Buses will be cleaned and disinfected according to the CDC guidelines• Students will wear face masks on the school bus since physical distancing protocols cannot be maintained while being transported• Students will follow driver's loading and unloading instruction• Students will have assigned/designated seating
Extra-curricular Activities	<ul style="list-style-type: none">• All safety precautions in green and yellow will be followed during the high-risk level• Parents only, or no spectators, depending on ability to physical distance in given facility• No district transportation provided
Priorities in Orange	<ul style="list-style-type: none">• Ensure students and staff who are ill or showing symptoms stay at home• Maximize physical distancing by reducing the number of students in school buildings

*Students/staff will be expected to follow any safety mandates from Eastern Idaho Public Health

Critical Risk

- Remote Instruction**
 - Focused, rigorous instruction on key standards in each grade and content area
 - Traditional grades and accountability
 - Clear expectations and communication with students and families
 - Some of the structure of regular school day with face-to-face online instruction with some flexibility for families
 - Support and training for parents who need help accessing technology, tools and online curriculum
- School Spaces**
 - Closed to the general public, except by appointment
 - There may be opportunities for in-person small group instruction or interventions
 - The district may offer internet access in areas such as cafeterias, libraries, gymnasiums, and parking lots
- Transportation**
 - No student transportation is provided
- Extra-curricular Activities**
 - Extra-Curricular events will be postponed and/or canceled
- Priorities in Red**
 - Reduce the risk of further community spread by closing schools

*Students/staff will be expected to follow any safety mandates from Eastern Idaho Public Health





Jefferson Joint School District #251
 Every Student Can Learn and Succeed
 3850 E 300 N
 Rigby, ID 83442
 (208) 745-6693 / (208) 745-0848 (fax)

Extra-Curricular Activity Plan Summary

Jefferson School District 251 will be open with safety and health protocols in place to mitigate and limit the spread of COVID-19. To make each of these possible scenarios easy to remember and implement, they have each been assigned a color:

MINIMAL RISK	<ul style="list-style-type: none"> • Games/practices held as scheduled following IHSAA guidelines • Facilities and equipment cleaned and sanitized after each practice/game • Team areas extended on sidelines to allow for physical distancing • Athletes will practice in cohort groups when possible to limit possible exposure • Practice stations will last no more than 10 minutes • Individual water bottles • To help prevent spread of the virus and ensure our seasons are able to progress we ask all participants to wear a mask on the bus or travel with a parent to and from events • Any student athlete with symptoms will stay at home and self-quarantine until cleared by medical professional • Six feet physical distancing will be maintained by spectators not of the same household, some seating will not be utilized within the facility
MODERATE RISK	<ul style="list-style-type: none"> • All safety precautions in green will be followed during the moderate risk level • Face coverings will be worn by players, coaches and spectators when not participating in play. • Student-athlete temperature checks before practice and competitions • Spectators limited to allow for physical distancing in the EIPH Moderate Risk Level (facility pending) • Team meals will be eliminated • Bus capacity 50% one student-athlete per seat, participants encouraged to ride with parents
HIGH RISK	<ul style="list-style-type: none"> • All safety precautions in green and yellow will be followed during the high-risk level • Parents only/ or no spectators depending on ability to physical distance in given facility • No district transportation provided
CRITICAL RISK	<ul style="list-style-type: none"> • Extra-Curricular events will be postponed and/or canceled

In all phases, student overnight travel will need district level approval and will be handled on a case-by-case basis

*This is a living document and we be revisited as the situation evolves.